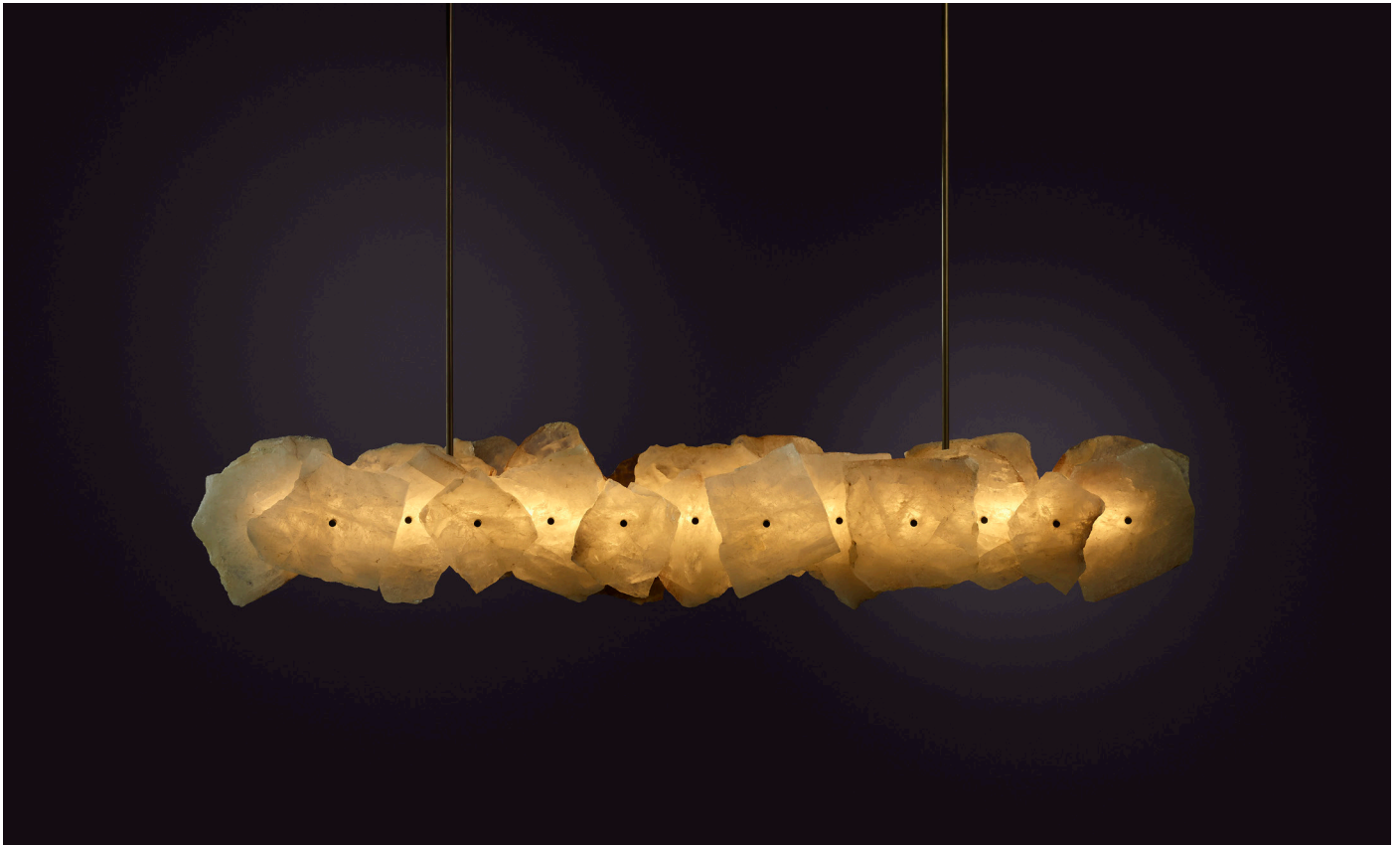


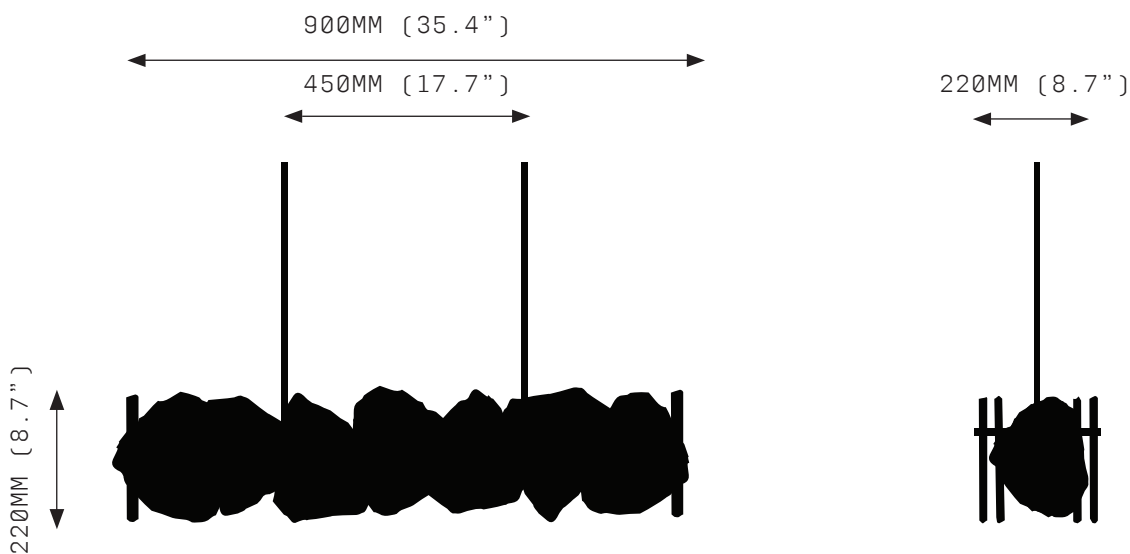
## PETRA II LINEAR 900



PETRA (from the Greek Πέτρα, meaning stone) celebrates the subtleties and complexities of quartz. Quartz was highly revered by the ancients who believed that it was eternally frozen ice, miraculous because it was divinely forged. Prized for its mythic origin, its strength and its lustre, quartz has long been used to articulate sacred objects.

Every PETRA embodies an individual stone biography, the resonance of formation made visible by individual colouration, translucency and veiny detail. PETRA amplifies the mythical and geological properties of quartz, merging fire and ice in stone.

# PETRA II LINEAR 900



FRONT VIEW

SIDE VIEW

## SPECIFICATIONS

Ordering Code:  
PET.2.900

Lamp:  
24V LED WW 2700K

Lumens:  
1236 LM

Voltage:  
24V DC

Watts:  
15W

Weight:  
Approx. 31kg\*  
\*Exclusive of canopy

Inclusions:  
16 Quartz crystal slices  
Power Supply Unit x 60W

Exclusions:  
User Interface, Dimmer Unit

## PRODUCT OPTIONS

Quartz:  
CQ Clear Quartz  
RQ Rose Quartz  
SQ Smoky Quartz

Finishes:  
AB Aged Brass

Suspension:  
ROD Vertical Rod

Canopy: \*  
RFM Round Flush Medium  
RFL Round Flush Large  
RSM Round Surface Medium  
RSL Round Surface Large  
Linear Flush Mount  
Linear Surface Mount  
\*Refer to Canopy Specification Guide

## WARRANTY

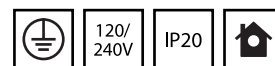
3 Years Fixture  
3 Years Power Supply Unit  
3 Years LED

Petra II Linear is a solid fixture that will require very little maintenance over the years.

If your Petra II Linear Sconce is treated with care, it will shine brightly for many years to come.

Quartz is a mineral formed by the Earth. Each crystal piece will be unique due to natural variation of size, shape, colour and clarity.

Contact us for custom variations.



Installation should only be undertaken by a qualified professional